

CZU [634.848.1:634.849]:57.047(478)(043.2)

*E.G. Alexandrov*¹, *doctor habilitat în biological sciences,*
*A.T. Sandu*²

¹Institute of Genetics, Physiology and Plant Protection of the USM,
²SRL "Miscanthus"

Chisinau, Republic of Moldova

e-mail: alexandrov.eugeniu@gmail.com

MITIGATION OF THE CHANGE OF CLIMATIC FACTORS IN THE PROCESS OF GRAPEVINE GROWING

Evaluating the climatic factors within the limits of the sector, where the respective researches were carried out, their tendency to change, towards the creation of arid conditions, was found. The change of climatic factors imposes the need to review the cultivation technologies of agricultural plants. An element of the technological cultivation process was used mulch from plant residues, Miscanthus sp. The experiment was carried out with the laying of mulch with a layer thickness of about 5 cm, the width of the strip about 50 cm and the length in a row of 15 meters. In order to measure the parameters, sensors were fixed in the soil, which determine, in the layer of 10-15 cm: the temperature in the soil, the temperature at the surface of the soil, the humidity of the soil, the electrical conductivity of the soil, as well as the amount of sunlight that falls on the surface of the soil. The respective sensors were placed both in the mulched and non-mulched area. At the time of initiation of the experiment, the soil moisture in the layer of 10-15 cm from the surface was about 20.48%. After covering the soil with mulch throughout the vegetation period, it was found that the soil moisture, in the case with mulch, is practically twice as high as in the case without mulch. The layer of mulch from plant residues contributes to: maintaining moisture in the soil, regulating the thermal regime of the soil, preventing erosion processes, stopping the development of weeds, enriching the soil with mineral nutrients, etc. Also, the use of mulch contributes to reducing the financial and human resources for maintaining plantations by about 25%. The productivity of the plants was about 25.5–29.5% compared to the control, the amount of sugars is about 2-3% higher compared to the case without mulch.

Keywords: electrical conductivity, mulch, temperature, vines, moisture.

INTRODUCTION

Agriculture is highly vulnerable to the ever-increasing variability of extreme climate factors and phenomena. The change in climatic factors will affect the productivity of agricultural crops, in the sense of reducing it. In order to improve the situation, it is necessary to use resources efficiently and motivate the use of technologies to increase the productivity of agricultural crops [1, 3]. Based on the situation created, it is necessary to promote a green economy policy by motivating, stimulating through various aspects (economic-financial, technologies, products, etc.) those who, as a result of the economic activity, cause an impact on the environment. The co-interest of economic agents is required in order to carry out a sustainable activity, both from an economic point of view and the impact on the environment and be minimal. Otherwise, without the promotion of such a policy, the expected results will be minimal and the state of natural resources and the environment will continue to degrade [2, 5]. The aim of the present study was to use mulch from plant residues (*Miscanthus* sp.) in grapevine cultivation. Mulching is an agricultural procedure, which consists in covering the soil surface under the plants with various materials to improve the conditions for the development and productivity of the plants [1-4]. Two main types of mulches are known - inorganic and organic. Inorganic mulch consists of various types and sizes of stone, gravel, geotextile fabric, etc. These materials do not decompose, they do not contribute to the improvement of the soil structure, so it is necessary to administer organic matter. However, inorganic mulch due to the light spectrum can influence plant development and productivity. For example, potato (*Solanum*

tuberosum L.), sweet pepper (*Capsicum* sp.) demonstrate increased productivity in the case of white mulch, tomatoes (*Solanum lycopersicum*) preferred mulch, etc. [3]. Organic mulch, in general, represents remains of plant origin. Depending on the material and climatic factors it breaks down, therefore it requires regular renewal [3, 6].

MATERIALS AND METHODS

Five varieties of grapevines served as the study object. Planting scheme 3 meters between rows and 1.5 meters between plants in a row. Sawdust from the vegetable mass of *Miscanthus* sp. served as mulch. The thickness of the mulch layer was about 10 cm, the width of the strip about 50 cm and the length in a row 15-20 meters. In order to measure the parameters, sensors were fixed in the soil, which determine, in the 10-15 cm layer: the temperature in the soil, the temperature at the surface of the soil, the humidity of the soil, the electroconductivity of the soil, as well as the amount of sunlight that falls on the surface of the soil. With the help of the weather station, the amount of precipitation, relative air humidity, air temperature was determined: average, minimum and maximum [1 - 4, 6, 8, 10].

RESULTS AND DISCUSSIONS

In the conditions of the change of climatic factors, it is necessary to review the cultivation technologies of agricultural crops. Evaluating the climatic factors within the limits of the sector, where the respective researches were carried out, their tendency to change, towards the creation of arid conditions, was found [1, 5, 6, 11, 12]. The average monthly temperature ($^{\circ}\text{C}$), period 2014-2021 (Chisinau) is shown in Fig. 1.

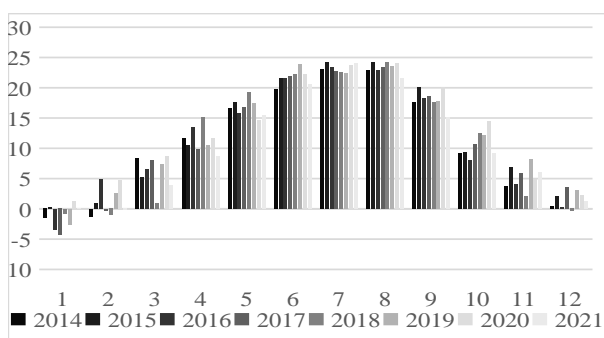


Fig. 1. Average monthly temperature ($^{\circ}\text{C}$), period 2014-2021 (Chisinau)

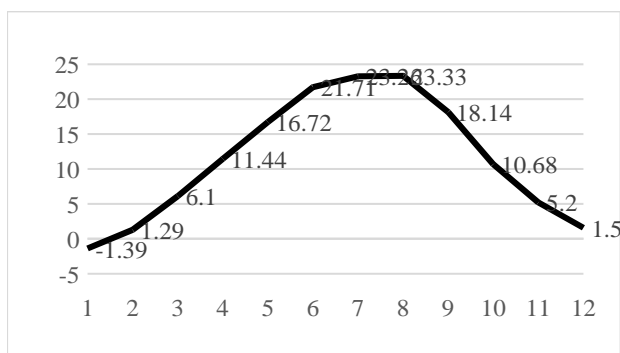


Fig. 2. The trend of the average monthly temperature ($^{\circ}\text{C}$) in the period 2014-2021 (Chisinau)

The monthly and annual temperature indices during the years 2014-2021, registered an increasing trend of these indicators (Fig. 2 and Fig. 3).

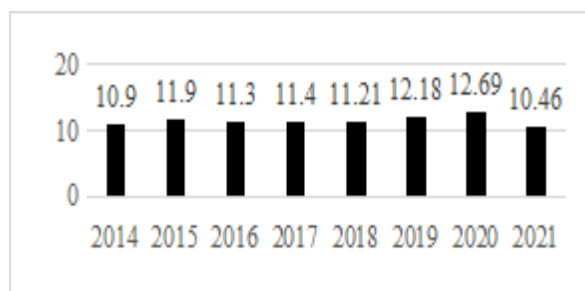


Fig. 3. Average annual temperature ($^{\circ}\text{C}$), period 2014-2021 (Chisinau)

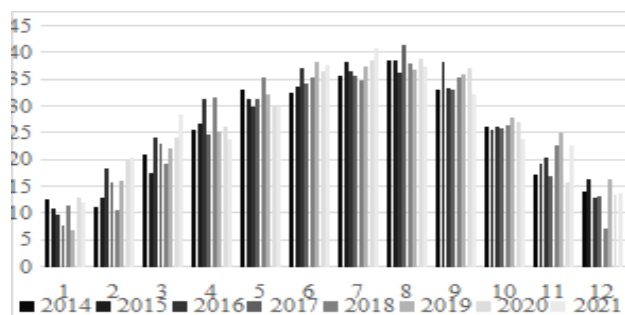


Fig. 4. Monthly maximum temperature ($^{\circ}\text{C}$), period 2014-2021 (Chisinau)

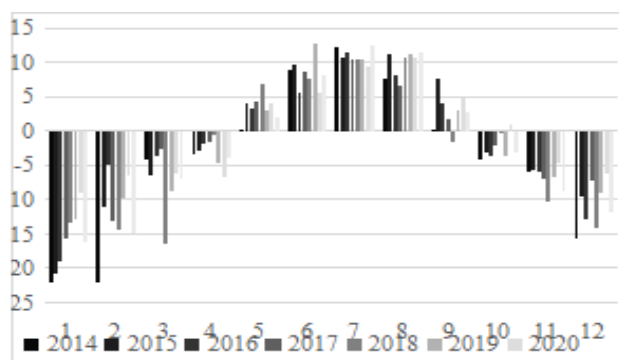


Fig. 5. Minimum temperature ($^{\circ}\text{C}$) monthly, period 2014-2021 (Chisinau)

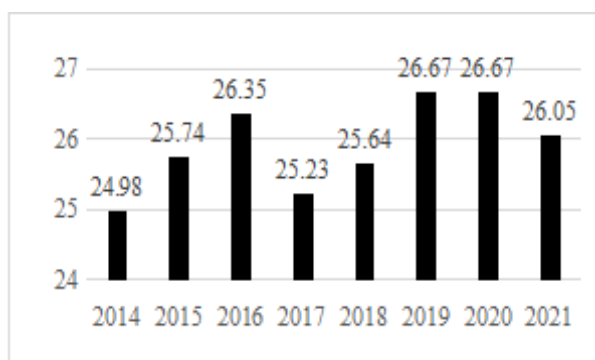


Fig. 6. Maximum temperature trend, (annual average), period 2014-2021 (Chisinau)

Maximum and minimum temperature (annual average) during the period 2014-2021 it was observed that in 2014, the maximum annual average was 24.9 $^{\circ}\text{C}$, and the minimum annual average was -4.04 $^{\circ}\text{C}$, while in 2021, the maximum annual average was 26.5 $^{\circ}\text{C}$, and the minimum annual average was -2.38 $^{\circ}\text{C}$ (Fig. 6). So, the trend of maximum and minimum temperature for the period 2014-2021 is increasing (Fig. 7.).

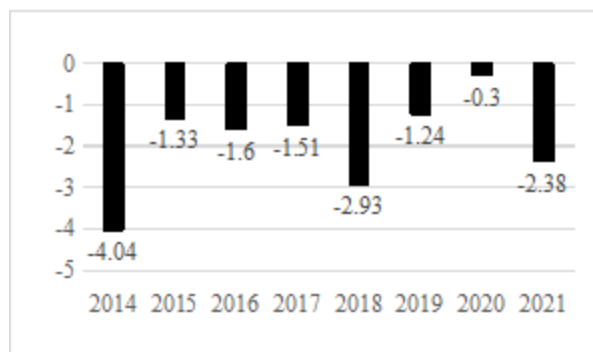


Fig. 7. Minimum temperature trend, (annual average), period 2014-2021 (Chisinau)

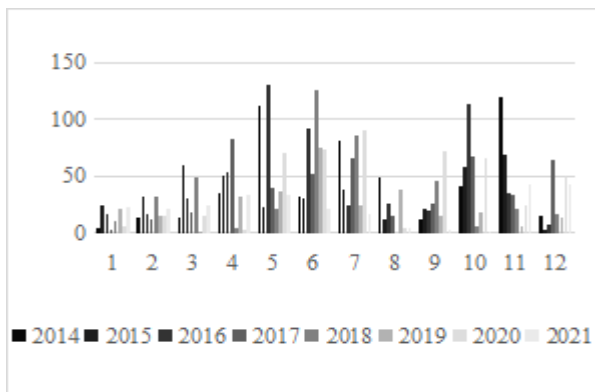


Fig. 8. Monthly amount (mm) of precipitation, period 2014-2021 (Chisinau)

Analyzing the amount of atmospheric precipitations that fell between 2014 and 2021, it was found that the maximum was 566.8 mm in 2016, and the minimum was 268.4 mm in 2021. Based on the indicators of the precipitation trend for this period, we come to the conclusion that the precipitation trend is decreasing (Fig. 8., Fig. 9. and Fig. 10).

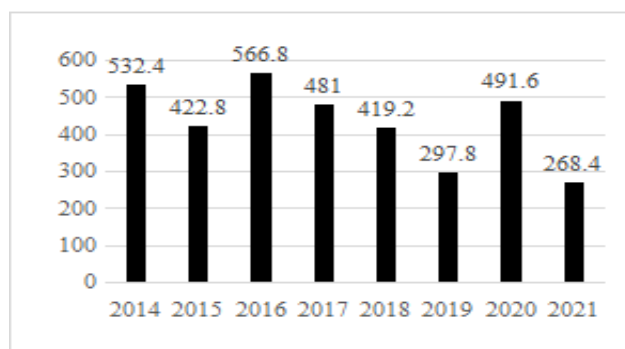


Fig. 9. Annual quantity (mm) of precipitation, period 2014-2021 (Chisinau)

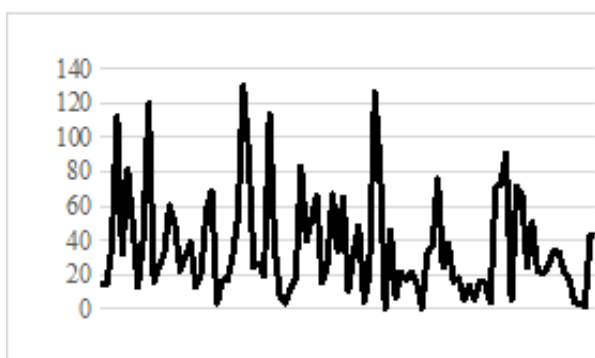


Fig. 10. Precipitation trend (mm), period 2014-2021 (Chisinau)

The amount of annual precipitation has a diverse character. In the future this diversification will be quite accentuated. Calculating the total amount of annual precipitations, we arrive at the fact that we have the annual precipitation norm. If we distribute this amount of precipitation over a certain period (days, weeks, months), we find that in a long period of time (4-6 months) there is no atmospheric precipitation, but in a very short time an amount of abundant precipitation (rain showers), far exceeding the norm for that period. Based on the fact that atmospheric precipitation has a diverse character and in the future it will intensify even more, actions are required to suppress the process of water evaporation and its preservation in the soil. Soil mulching contributes to reducing the evaporation process and maintaining moisture in the soil, suppresses the growth of grasses, stops surface runoff and accelerates the penetration of rainwater into the soil, thus preventing the erosion process. However, the mulch helps to improve the soil structure, ensures the development of the activity of microorganisms and the root system, etc. Ultimately, all this leads to good plant growth and productive development.

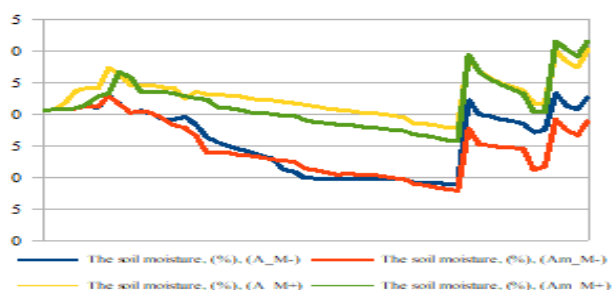


Fig. 11. The soil humidity (10-15 cm layer). (A_M- - without mulch; A_M+ - with mulch)

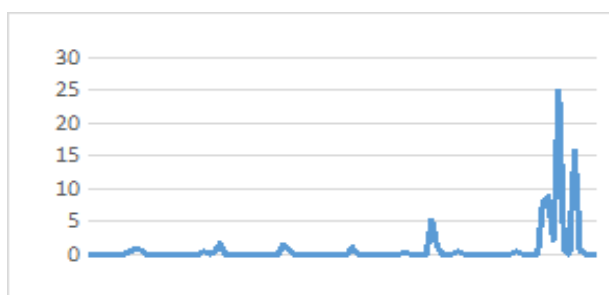


Fig. 12. The amount of precipitation.

At the time of setting up the experiment, the soil moisture in the 10-15 cm layer from the surface was about 20.48%. After covering the soil with mulch throughout the vegetation period, it was found that the soil moisture, in the case with mulch, is practically twice as high as in the case without mulch (Fig. 11.).

During the period May - August 2022 atmospheric precipitation was insignificant. In January there were 14.6 mm of precipitation, February and March 5.0 mm and 6.0 mm respectively, April – 40.8 mm, May and June each 4.4 mm and 3.0 mm, July – 26.2 mm and in August 87.0 mm (Fig. 12.). The soil structure of lands with insufficient water, as a rule, differs essentially compared to the soil structure of lands with abundant water. The water holding capacity is easily determined due to the electrical conductivity of the soil. The average level of electrical conductivity indicates that the soil has an average structure and, consequently, has an average drainage capacity. Such soils are the most fertile. Because water holding capacity has a major impact on cereal crop productivity [5, 12].

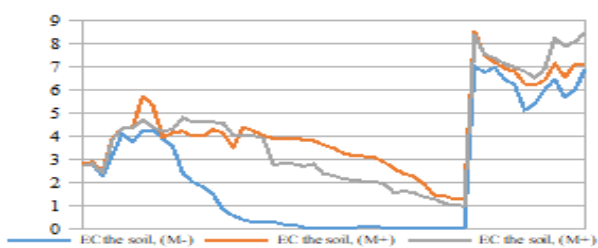


Fig. 13. The electrical conductivity of the soil. (M- - without mulch; M+ - with mulch)

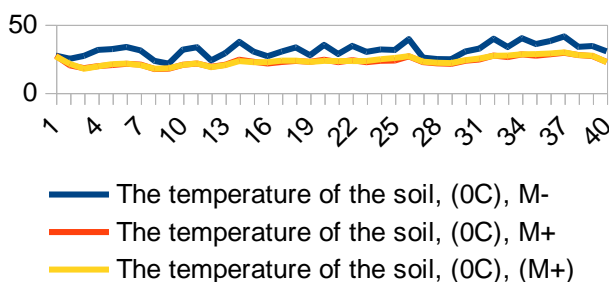


Fig. 14. The temperature of the soil. (M- - without mulch; M+ - with mulch)

Electroconductivity is a method of determining soil fertility (granulometric and mineralogical, pH, humidity, absorption capacity, etc.), which allows to determine the need and the necessary quantity of introducing fertilizers into the soil. Using electroconductivity techniques allows not only determining the potential of soil fertility, but also ensuring the development of sustainable agriculture, determining the ability to provide plants with mineral substances necessary for the development and maintenance of vital processes, determining the level of soil pollution with toxic substances, assessing the cultivation capacity of certain crops on different types of soil, etc. As a result of the mounted experiences, it was found that the electroconductivity of the soil in the case with mulch demonstrates much higher indices than in the case without mulch (Fig. 13). The soil temperature in the 10-15 cm layer in the case with mulch is about 10 degrees Celsius lower than in the case without mulch (Fig. 14.). Thus, by improving soil conditions, mulch has a positive effect on plant development and productivity. So, if the soil was covered with mulch, the annual shoot growth was 12-20% higher and the plant productivity was 25.5-29.5% compared to the control. Also, the content of sugars, in the case with mulch, is 2-3% higher compared to the case without mulch. The financial resources needed to carry out agrotechnical works, related to soil processing, are reduced by approx. 25-35%. During the course of the experience, it was found that in the case of covering a respective layer with mulch, the growth of grasses is stopped one by one and the process of soil erosion is prevented [8, 9].

CONCLUSIONS

Use of the *Miscanthus* sp. mulch layer: - maintains soil moisture; - stops the growth of grassy plants; - contributes to the restoration of the fertile layer; - reduces soil temperature; - prevents soil erosion; - reduces the financial and human resources for maintaining the plantations by about 25%; - plant productivity increases by 25-29%.

REFERENCES

1. Alexandrov E. Genotipurile de viță-de-vie în contextul schimbării factorilor climatici. Chișinău, 2023a. 131 p.
2. Alexandrov E. A way of mitigation and adaptation to climate change. *Scientific Papers Series Management, Economic Engineering in Agriculture and Rural Development*. 2023b. Vol. 23(1). P. 39-42.
3. Alexandrov E. Organic viticulture. Real opportunities for implementation. *Scientific Papers. Series Management, Economic Engineering in Agriculture and rural development*. 2019. Vol. 19(1). P. 25-30.
4. Alexandrov E., Botnari V., Gaina B. Soiuri interspecifice rizogene de viță-de-vie. *Particularități de cultivare*. Chisinau, 2020. 95 p.
5. Schimbările climatice și starea actuală a peisajelor. Atlas. Chișinău, 2021. 100 p.
6. David L., Andreu M., Miguel P., María de Toro Jordi T., Alicia P. Organic mulches in grapevine shape bacterial communities in specific vintage and location. *In: Applied Soil Ecology*. 2024. 201 p.
7. Dobrei A., Dobrei A. Viticultura: bazele biologice și tehnologice (Viticulture: biological and technological bases). Timișoara, 2011. 210 p.
8. Gaina B., Alexandrov E. Determination of the spectrum of volatile chemical compounds in the berry juice of interspecific rhizogenic grapevine genotypes. *Romanian journal of horticulture*. 2023. Vol. 4. P. 141-146.
9. Georgescu M., Dejeu L., Ionescu P. Ecofiziologia viței-de-vie. București, 1991. 136 p..
10. Nan R., Dobrei A., Alexandrov E., Nistor E., Nan Al., Dobrei A. The influence of different soil management and fertilization methods on the grapevine production costs and profitability. *In: Journal of Horticulture, Forestry and Biotechnology*. 2021. Vol. 25(3). P. 1-7.
11. Șișcanu Gh. Fotosinteza și funcționalitatea sistemului donator-acceptor la plantele pomicole. Chișinău. 2018. 316 p.
12. Vizitiu D. E., Dinca L., Donici A., Enache. The management of soils from viticultural

plantations. Scientific Papers. Series Management, Economic Engineering in Agriculture and rural development."2020. Vol. 20(1). P. 619-624.

Є.Г. Александров¹, д-р біол. наук, А.Т. Санду²

¹Інститут генетики, фізіології та захисту рослин УААН,

²ООО «Міскантус»

м. Кишинів, Республіка Молдова

ПОМ'ЯКШЕННЯ ВПЛИВУ ЗМІНИ КЛІМАТИЧНИХ ФАКТОРІВ НА ПРОЦЕС ВИРОЩУВАННЯ ВИНОГРАДУ

*Оцінюючи кліматичні фактори в межах ділянки, де проводились відповідні дослідження, було виявлено їх тенденцію до зміни в бік створення посушливих умов. Зміна кліматичних факторів зумовлює необхідність перегляду технологій вирощування сільськогосподарських рослин. Елементом технологічного процесу вирощування була використана мульча з рослинних решток *Miscanthus sp.* Експеримент проводився з укладанням мульчі з товщиною шару близько 5 см, шириною смуги близько 50 см і довжиною в ряду 15 метрів. Для вимірювання параметрів в ґрунті були закріплені датчики, які в шарі 10-15 см визначають: температуру в ґрунті, температуру на поверхні ґрунту, вологість ґрунту, електропровідність ґрунту, а також кількість сонячного світла, яке падає на поверхню ґрунту. Відповідні датчики були розміщені як на замульчованій, так і на замульчованій ділянці. На момент початку експерименту вологість ґрунту в шарі 10-15 см від поверхні становила близько 20,48%. Після покриття ґрунту мульчею протягом усього періоду вегетації було виявлено, що вологість ґрунту у випадку з мульчею практично вдвічі вища, ніж у випадку без мульчі. Шар мульчі з рослинних решток сприяє: збереженню вологи в ґрунті, регулюванню теплового режиму ґрунту, запобіганню ерозійних процесів, припиненню розвитку бур'янів, збагаченню ґрунту мінеральними поживними речовинами тощо. Також використання мульчі сприяє скороченню фінансових та людських ресурсів на догляд за насадженнями приблизно на 25%. Продуктивність рослин становила близько 25,5-29,5% порівняно з контролем, кількість цукрів приблизно на 2-3% вища порівняно з варіантом без мульчі.*

Ключові слова: електропровідність, мульча, температура, виноградна лоза, волога.